



# THE TOWERS

LUXURY RESIDENCES



# PANAMA CITY

Panama City is a magical place with an important cultural mix. In a few years it achieved to become an area of cosmopolitan life, a charming combination of the historic and modern, the international and latino.

One of its main attractives is its colorful bay with a skyline full of lights, where Desarrollo Bahía took part of its important construction.



# D

## ESIGNER

Carolina Castrillón

A interior designer with more than 12 years of experience. Empirical, art and aesthetic lover in every aspect. She conceives spaces with a sensorial awareness where balance plays the main role. She started to work in projects in Panama in 2010 taking part of Casacor, from there she started to work with developers, residential and commercial clients. "I like the residential work, from start to end where I put works of art and decorations. For me the interior design it's a passion that allows me to express my creative and artistic side"



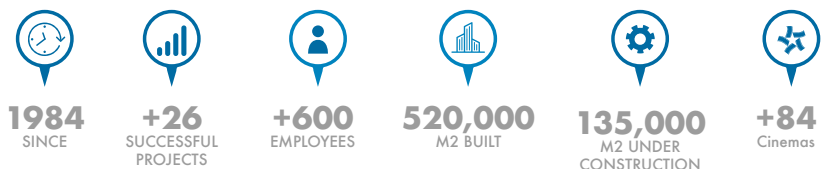
# DEVELOPERS

DESARROLLO BAHIA



## LUXURY DEVELOPERS

Building emblematic projects since 1984



### +35 YEARS OF EXPERIENCE

for 35 years, Desarrollo Bahía has lead the real estate development in Panama City. With each Project we have sought to reinvent ourselves, investing in the future.

The company refuses to settle with traditional projects; it has a rich and diverse portfolio of more than 360,000m2 and others of 160,000 under construction between residential and commercial projects, cinemas, malls and hotels which make them pioneers in the real estate and construction world, naturally establishing new standards in the industry.



Panama's Bay 1965



Panama's bay 2018



LIKE  
NOTHING  
YOU'VE SEEN  
BEFORE

# THE EXPERIENCE AT THE TOWERS



# 46

## SKYDECK

- Outdoors VIP Cinema
- Spa
- Sushi Bar
- Yoga and meditation room
- Infinity Pool
- Tanning area
- Roofed Terrace
- Conference room and offices

## SOCIAL AREA

- Infinity pool
- Basketball court
- Football court
- Tennis court
- Gym
- Boxing ring
- Children's playroom
- Sports bar
- Roofed Terrace
- Tanning Area
- Party room

# AS

# PB

## ELEGANTE LOBBY

- 1.5m height Lobby
- Interior design by Adriana Hoyos
- Imposing garage door
- Elegant Entrance



**WELCOME TO A NEW EXPERIENCE**





# LUXURY HOTEL EXPERIENCE

When you arrive to the imposing and elegant garage door, **THE TOWERS** welcomes you with the treatment and experience of a five stars hotel that you deserves. A project designed to please its residents, facilitates and improve your daily experience in every area of the building.

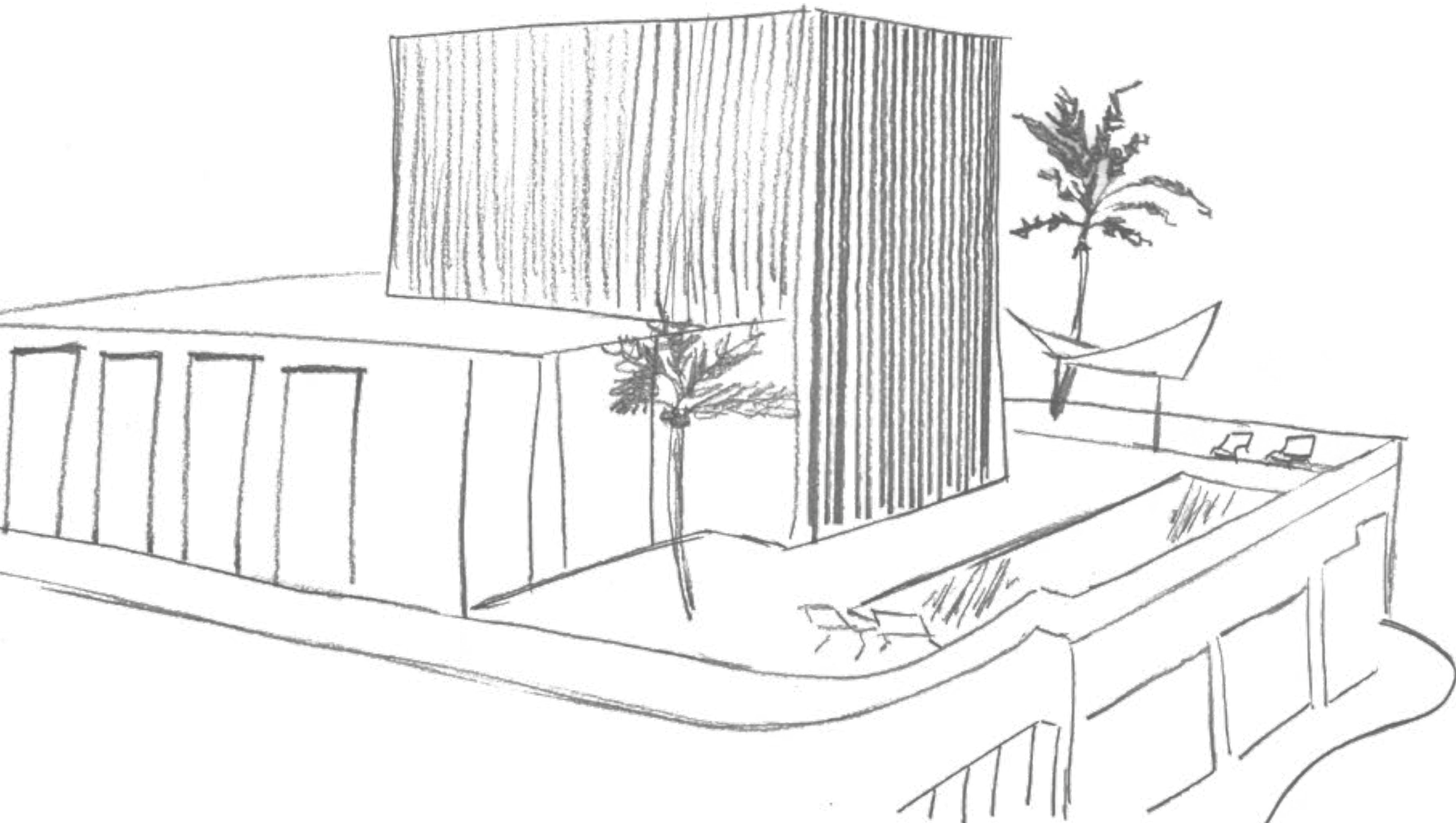




# THE COFFEE SHOP

Live the experience of having your own Coffee Shop at home. **THE TOWERS** surprises you with a hotel-like lifestyle, where every of your needs are reflected in each area of the project. Thinking in your comfort and wellbeing.





# SKYDECK

Nivel 46

---



# SKYDECK

## Nivel 46

---

1. Sports bar
2. Gym
3. Spa
4. Yoga and Meditation room
5. Conference room and offices
6. Outdoor VIP Cinema
7. Infinity pool
8. Tanning Area
9. Sushi bar
10. Roofed Terrace





# Movies Under The Stars

**THE TOWERS** is the only project that offers an outdoor cinema area. As Cinepolis partners is our duty to offer all our clients with a VIP experience at home.



# KEEP CALM AND DO YOGA

We know that the most important thing is self love and a little of "me time" for this reason we've designed a very special space with the best energy for Yoga, Meditation and relaxation. In a long day, inhale, exhale and go up to the amazing Skydeck...

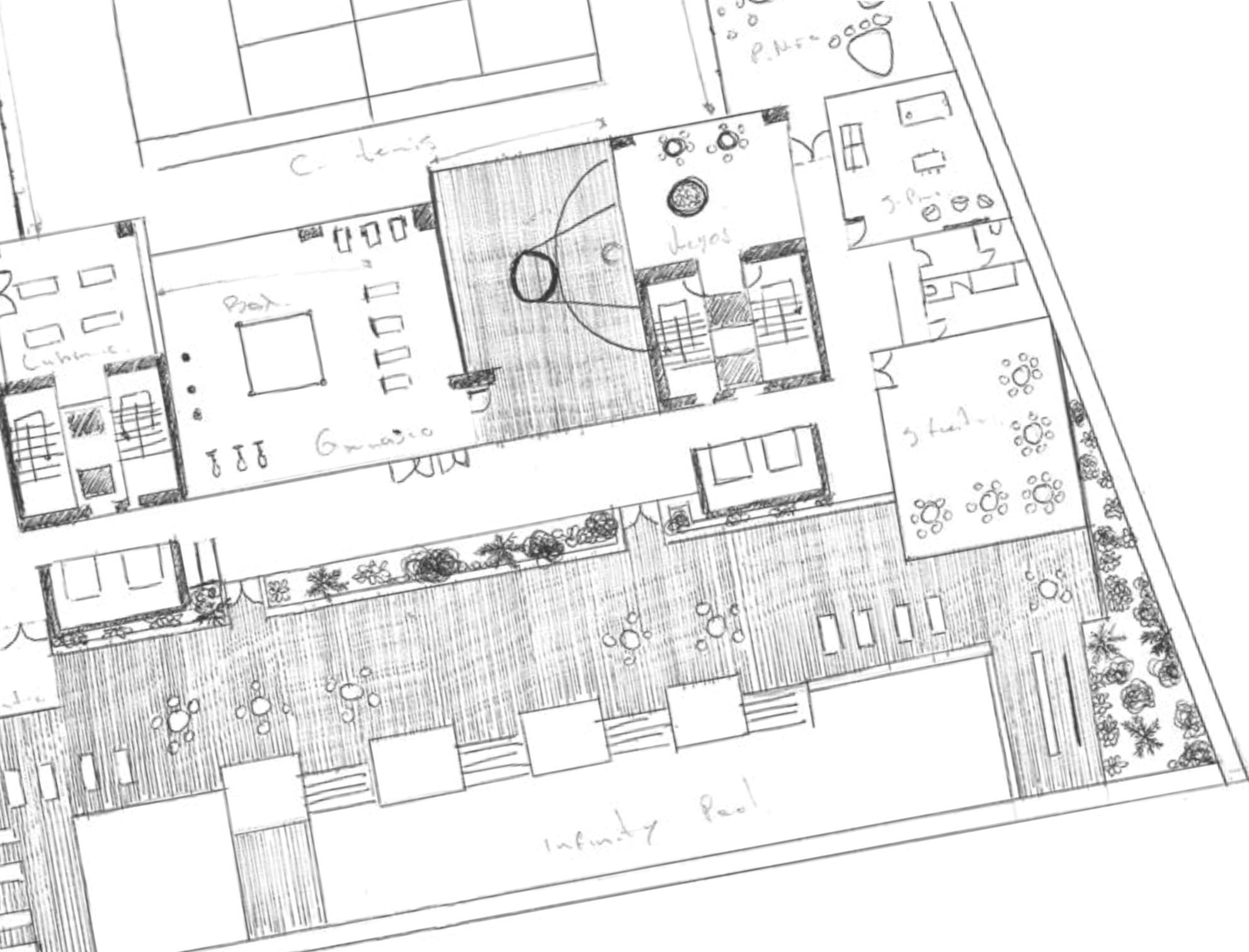




# THIS IS HOW WE ROLL

One of the most special areas of our projects is the SUSHI BAR. Have you ever wanted sushi 24/7? we know you do, for this reason we have designed this space with the best view of the project for you to enjoy Sushi with friends and family all day long.





# SOCIAL AREA

LEVEL 6 - 3,500M2

---





# SOCIAL AREA

## Level 6

---

1. Football Court
2. Tennis Court
3. Children's Park
4. Sports Bar
5. Party Room
6. Infinity Pool
7. Tanning Area
8. Work Station
9. Conference Room
10. VIP Cinema
11. Library
12. Gym
13. Basketball Court
14. Children's play room
15. Boxing Ring





# H EALTHY LIFESTYLE

Because we support an active and healthy lifestyle we've designed multiple sport courts in different areas of **THE TOWERS**. A Boxing Ring, an illuminated closed indoors basketball court, a fully equipped gym and much more.



# FITNESS CENTER

In **THE TOWERS**, you are our priority and with the goal of promoting an active and healthy lifestyle we have designed more than 3,500m<sup>2</sup> of Social Area with multiple sport courts, including Tennis, Basketball and Soccer.





# T IME TO PLAY

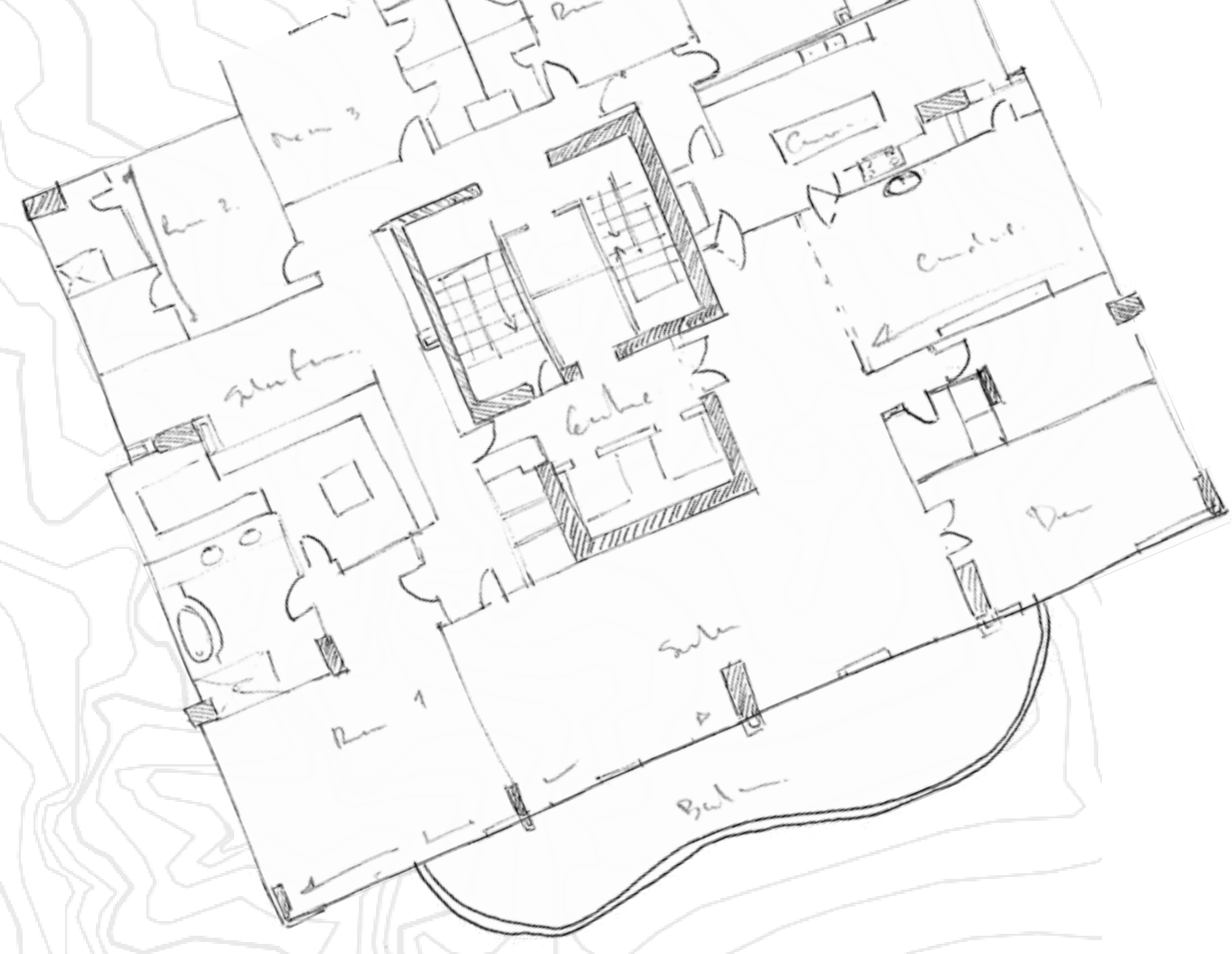
We have created outdoor and indoor spaces thinking of the little ones in the family, with a variety of games for the fun of our cherished ones. The Towers has entertainment for the entire family.



# WORKSTATION AND BOOKSTORE

What could be more comfortable than working from home? nothing and we know it, for this reason we have designed a special place for you to attend your professional affairs, including desktops and a conference room.





# INNOVATIVE LAYOUT DESIGN

---

320m<sup>2</sup> · 390m<sup>2</sup> · 615m<sup>2</sup>







# THE APARTMENTS

---

- Wide and Curve Balcony
- Spectacular view to the sea
- Modern finishes in every area
- Marble floor in all areas
- European designed Kitchen with a waterfall topping isle
- Bathrooms with decorative mirrors
- Walk-in closets in every bedrooms
- Just 2 apartments per level





# THE VIEW

For its position, **THE TOWERS** offers one of the best views of Punta Paitilla. Besides, we managed to amplify the view's angle from every apartment due to its curved windows.

# YOUR OWN SPA

For the bathroom's design, we were inspired by the Tranquility and serenity of a spa . rounded mirrors, marble walls and floor, modern and high standard faucets. Each detail will make you feel in your own relaxation space.





# CLOSET-BOUTIQUE

A closet is a space to store your clothing. A boutique is a space to express yourself through fashion. At The Towers we will surprise you with a detailed and modern design where we make of a simple closet a Haute Couture Catwalk.



# BON APPETITE!

Each apartment has a spectacular and wide closed kitchen with an intimate breakfast bar and a modern isle with waterfall Silestone toppings.









# FLOOR PLAN

## 320m<sup>2</sup>

- 3 Bedrooms
- 3.5 Bathrooms
- Maids quarter
- Living room · Dining room
- Family room
- Kitchen
- Laundry room
- Balcony





# FLOOR PLAN

## 390m<sup>2</sup>

4 Bedrooms  
4.5 Bathrooms  
Maids quarter  
Living room  
Dinning room  
Family room  
Kitchen  
Laundry room  
Balcony





# FLOOR PLAN

## 615m<sup>2</sup>

- 4 Bedrooms
- 4.5 Bathrooms
- Maids quarter
- Living room
- Dinning room
- Family room
- Kitchen
- Laundry room
- Balcony











# IT'S ALL ABOUT LOCATION

## AT PUNTA PAITILLA

The Towers is located in one of the most luxurious zones in the center of the City: close to

-  • 3 of the most important hospitals of the city (Pacífica Salud Hospital, Paitilla Medical Center, Pacific Center)
-  • 2 of the city's most important malls (Multicentro and Multi Plaza)
-  • only 10 minutes from Casco Viejo, the city's most entertaining zone, close to Cinta Costera a City's main road
-  • 5 minutes walking from the Banking Area

## ▶ WHAT'S THE STORY BEHIND THE TOWERS?

**THE TOWERS** is a project that was conceived to be the only lifestyle project in Punta Paitilla.

### WHAT IS LIFESTYLE?

Lifestyle it's an experience. Arriving home and having a prepared staff ready to receive and help you. Inviting your friends and family to the only skydeck in the zone to spend some good time under the stars with music and Panama's best view, a good glass of wine and fresh sushi. Going out in a rush to work and be able to get a cup of coffee from the building's coffee shop without the need of extra stops



## ▶ WHO WAS IT DESIGNED FOR?

For young families with modern tendencies, families that dream of a home with trendy finishes. Everything is focused on the current tendencies, for instance, the curved balconies with unique and sophisticated details that also generates extra amplitude to each terrace. We hired an argentinian company in association with Carolina Castrillón for thorough choice of every detail, faucet, materials and finishes.

as for the square meters, historically we have built the largest projects but today's tendency are smaller places, investing that extra square meters in the enlargement of entertainment areas and amenities.

It is designed for families to wish to live here for the rest of their days.

## ▶ Why Paitilla?

Paitilla's community is very classical and next to Punta Pacifica are the most luxurious zones at the center of the city. Is not just a very prestigious zone but it gives you the privilege to live 10 minutes from Casco Antiguo, 5 minutes from the malls and the city's most important hospitals

If we talk specifically about the view, from Punta Paitilla you get the best angle, the mighty pacific ocean can be observed, the joyful and concurred Casco Antiguo, The Cinta Costera with its incredible design, the Islands and the Causeway.







1989  
Mediterrané

The beginning of a dream that today takes more than 30 years. Mediterrané was our first project under construction, at the time, one of the highest towers in Panama.



1996  
Villa Marina



1998  
Hotel Marriott Panama

Desarrollo Bahia sets foot in the hospitality world, marking the difference with the first luxurious hotel, the first Marriott in the country.



2003  
Bahía Pacífica



2008  
C.C. Multiplaza Pacific

Introducing ourselves into the commercial world, we became part of the construction of the most luxurious, largest and recognized shopping mall in the country.



2011  
VIP Multiplaza

4 Cinemas  
Always focused on luxury, we arrive in Panama with the first VIP cinema room with leather seats, bar / restaurant and personalized attention.



2012  
Miradores

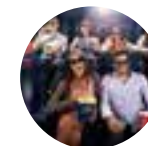


2013  
Cinepolis Westland mall

8 cinemas



2015  
Financial Park



2016  
Cinepolis Los Andes Mall

6 cinemas



2017  
Cinepolis Town Center

3 cinemas VIP  
5 cinemas



The Regent  
Under construction.



# +35 YEARS OF EXPERIENCE



1993  
Mar de Plata



1998  
Plaza Banco General

First luxury office tower in the city, located where all businesses are centered, the banking area.



2002  
Península



2004  
Punta Roca



2008  
Cinepolis MP

10 cinemas

Cinépolis arrives to Panama from the hand of Desarrollo Bahia. First Cinema room with the latest technology screens in the country.



2011  
Cinepolis Metromall

10 cinemas



2012  
The Point

One of the most iconic tower at Panama skyline. Awarded by Cinemas as the highest residential project in Latin America.



2012  
Tower Financial Center

Luxury and business merge into one of the most elegant and iconic towers in Panama City, the TowerBank Tower.

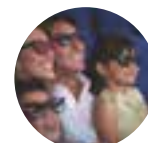


2014  
Country Club



2015  
Cinepolis VIP Soho Mall

7 cinemas



2017  
Cinepolis Dorado Mall

9 cinemas



The Tower

Under construction



Skyline

Under construction



+507 214.8888

[ventas@desarrollobahia.com](mailto:ventas@desarrollobahia.com)

[www.DesarrolloBahia.com](http://www.DesarrolloBahia.com)

